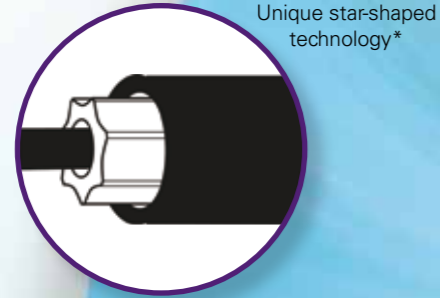


**TORTUOUS ANATOMY**

Unique star-shaped inner catheter design\* helps promote reliable needle actuation in tortuous anatomy (even after kinking)



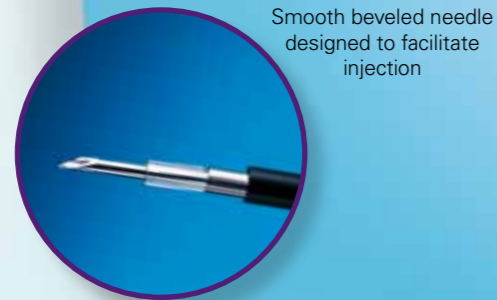
Unique star-shaped technology\*

**EFFICIENT ACCESS**

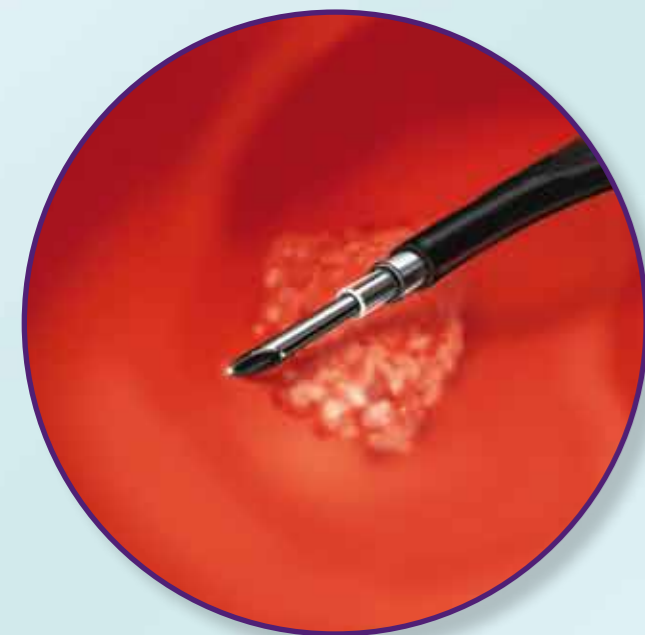
Pushable sheath construction designed to facilitate advancement through difficult pathways to remote anatomy

**SMOOTH NEEDLE PENETRATION**

Beveled needle designed to facilitate injection



Smooth beveled needle designed to facilitate injection



Convenient locking hub for procedural efficiency

**Resolution™ Clip**

Order Number	Working Length (cm)	Minimum Working Channel (mm)	Clip Opening (mm)	Units
M00522600	155	2.8	11	Box 1
M00522601	155	2.8	11	Box 10
M00522602	155	2.8	11	Box 20
M00522610	235	2.8	11	Box 1
M00522611	235	2.8	11	Box 10
M00522612	235	2.8	11	Box 20

**Injection Gold Probe™**

Order Number	O.D. (F/mm)	Needle			Minimum Working Channel (mm)	Working Length (cm)	Connector	Units
		Gauge	O.D. (mm)	I.D. (mm)				
M00560150	7/2.33	25	0.51	0.24	2.8	210	Standard	Box 1
M00560160	10/3.33	25	0.51	0.24	3.7	210	Standard	Box 1

**Gold Probe™**

Order Number	O.D. (F/mm)	Minimum Working Channel (mm)	Working Length (cm)	Connector	Units
M00560070	7/2.33	2.8	300	Standard	Box 1
M00560071	7/2.33	2.8	300	Standard	Box 5
M00560100	10/3.33	3.7	300	Standard	Box 1
M00560101	10/3.33	3.7	300	Standard	Box 5
M00560220	7/2.33	2.8	350	Standard	Box 1

**Interject™**

Order Number	Sheath Design	Sheath O.D. (mm)	Needle			Maximum Needle Extension Length (mm)	Working Length (cm)	Units
			Gauge	O.D. (mm)	I.D. (mm)			
M00518151	Contrast	1.8	23	0.64	0.32	4	200	Box 5
M00518161	Contrast	1.8	25	0.51	0.24	4	200	Box 5
M00518251	Contrast	1.8	23	0.64	0.32	6	200	Box 5
M00518261	Contrast	1.8	25	0.51	0.24	6	200	Box 5
M00518351	Contrast	2.3	23	0.64	0.32	4	240	Box 5
M00518361	Contrast	2.3	25	0.51	0.24	4	240	Box 5
M00518111	Clear	1.8	25	0.51	0.24	4	200	Box 5
M00518301	Clear	2.3	23	0.64	0.32	4	240	Box 5
M00518311	Clear	2.3	25	0.51	0.24	4	240	Box 5

**Speedband™ Superview™ Super 7™**

Order Number	Minimum Working Channel (mm)	Scope O.D. (mm)	Bands/Ligating Unit	Units
M00542250	2.8	8.6-11.5	7	Box 1
M00542251	2.8	8.6-11.5	7	Box 2
M00542253	2.8	8.6-11.5	7	Box 4

Irrigation catheter supplied in each kit

⊗ For single use only. Do not reuse.

<sup>1</sup> Jensen et al 2009, Gastrointestinal Endoscopy, Volume 70, No. 5 : 969  
<sup>2</sup> Jensen et al 2008, Gastrointestinal Endoscopy, Volume 67, Issue 5, April 2008, Pages AB254  
<sup>3</sup> Adler et al 2009, DDW 2009 Poster

To learn more about Hemostasis Solutions, go on: [www.youtube.com/bostonscientificendo](http://www.youtube.com/bostonscientificendo)  
 Or use your smart phone to scan this code.

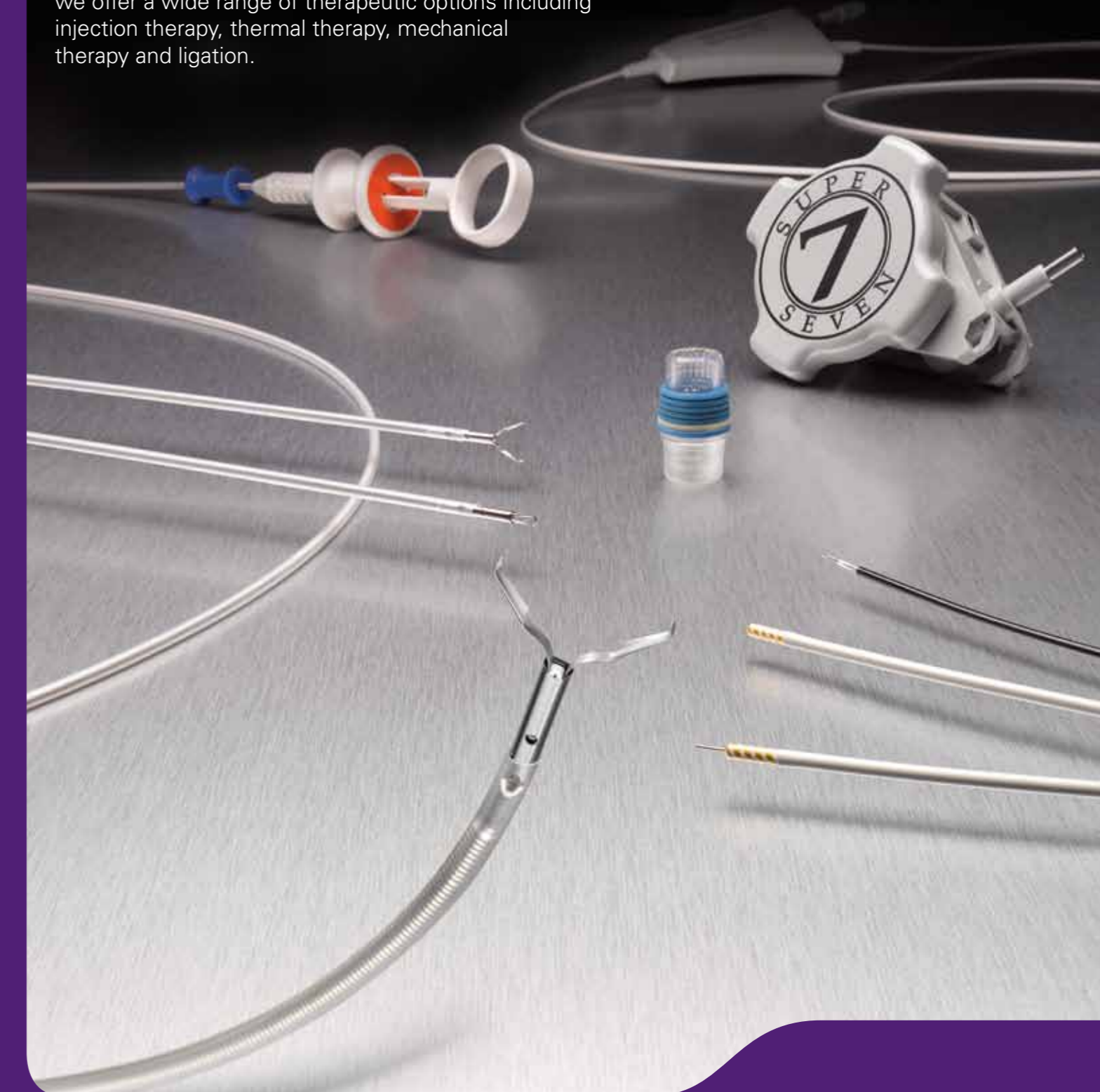
All cited trademarks are the property of their respective owners. CAUTION: The law restricts these devices to sale by or on the order of a physician. Indications, contraindications, warnings and instructions for use can be found in the product labelling supplied with each device. Information for the use only in countries with applicable health authority product registrations.  
 ENDO-153329-AA April 2013. Printed in The Netherlands by DeBudeise / creativeservices.

\*Patent on file Boston Scientific Corp.

**Hemostasis Solutions**

*Boston Scientific is committed to improving patient care in the management of gastrointestinal bleeding.*

Through innovation and continuous educational support, we offer a wide range of therapeutic options including injection therapy, thermal therapy, mechanical therapy and ligation.



# Resolution™ Clip

Hemoclip

## RESOLUTION CLIP IS INTENDED TO BE USED FOR\*

- Hemostasis within the entire GI tract
- Endoscopic marking
- Closure of GI tract luminal perforations
- Anchoring jejunal feeding tubes



MR Conditional per ASTM F2503



### REOPENING CAPABILITY

The radiopaque Resolution™ Clip is **engineered to enable opening and closing up to 5 times** prior to deployment, aiding in repositioning of the clip\*\*

### PROVEN RETENTION PERFORMANCE

- Significantly higher retention rate than competitor clips<sup>1</sup>
- Deeper penetration into the tissue portion of the lesion<sup>2,3</sup>



Two Resolution Clips placed on Chronic Gastric Ulcer base\*\*\*

### USER-FRIENDLY HANDLE

Designed to deliver a familiar actuation for opening and closing the jaws. Provides **tactile** and **audible** (1st click, 2nd click) feedback upon closing of jaws, indicating that the clip is being deployed

### 11MM-WIDE JAW SPAN

Intended to **grasp a sizeable amount** of tissue

### OVER-SHEATH GRIP



Stopper

### OVER-SHEATH

\*See detailed information in the "Instructions for Use" supplied with the product.  
 \*\*Re-opening and closing capability may be limited by clinical circumstances and patient anatomy, among other factors.  
 \*\*\*Image courtesy of Dennis M. Jensen, MD, CURE DDRC, UCLA & VA Medical Centers, and David Geffen School of Medicine at UCLA.

# Injection Gold Probe™ & Gold Probe™

Bipolar Electrohemostasis Catheters

### PROPRIETARY DISTAL TIP DESIGN

- Rounded Gold distal tip is designed to provide excellent conductivity, uniform burn, and effective coagulation in various tip positions
- Precision spacing of electrode pairs helps control coagulation depth



A 10F (3.3 mm) Injection Gold Probe Catheter is used to inject a vasoconstrictor around the vessel.

### FIRM CATHETER SHAFT FOR TAMPONADE

- Designed to reduce kinking, facilitating advancement and helping to provide better *en face* and tangential tamponade
- Hemoglide coating helps reduce surface friction to facilitate passage through the endoscope

### UNIQUE INTEGRATED INJECTION AND THERMAL HEMOSTASIS CAPABILITIES

- Designed to help reduce catheter exchanges and procedural time
- Engineered for smooth, consistent needle extension, even in difficult endoscope positions
- Integrated irrigation channel with port located distal to generator connectors facilitating manual or mechanical irrigation for visibility

### INJECTION GOLD PROBE HANDLE



# Speedband™ Superview™ Super 7™

Multiple Band Ligator

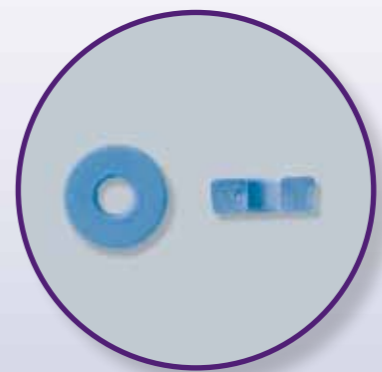


### ERGONOMIC HANDLE WITH PRE-LOADED WIRE AND SCOPE FASTENER

- Handle attachment engineered to offer operator comfort
- Audible click, tactile and visual stop to confirm band deployment

### CLEAR LIGATING UNIT WITH REAR-MOUNTED BANDS

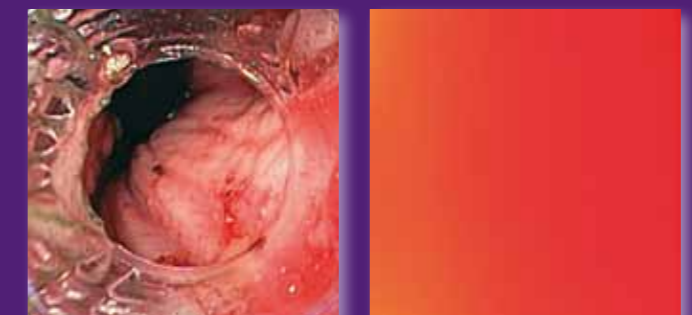
- Provides excellent visibility for rapid navigation and pathology identification
- Single string deployment allows excellent suction for tissue capture, band placement and band retention
- Alert Band offers a visual clue that only one band remains



### SQUARE MOULDED BANDS

- Ensure consistent shape and reliable performance
- Latex-free material designed to reduce the risk of allergic reactions

### Excellent Visibility and Suction



### Single and Multiple Variceal Band Ligation



Endoscopic images above courtesy of Prof. Dr. J. Hochberger, University of Erlangen